

Research

Open Access

## Placentation in dolphins from the Amazon River Basin: the Boto, *Inia geoffrensis*, and the Tucuxi, *Sotalia fluviatilis*

Vera MF da Silva<sup>1</sup>, Anthony M Carter<sup>\*2</sup>, Carlos E Ambrosio<sup>3</sup>, Ana F Carvalho<sup>4</sup>, Marina Bonatelli<sup>3</sup>, Marcelo C Lima<sup>3</sup> and Maria Angelica Miglino<sup>3</sup>

Address: <sup>1</sup>National Institute of Amazonian Research, Manaus, AM, Brazil, <sup>2</sup>University of Southern Denmark, Odense, Denmark, <sup>3</sup>University of Sao Paulo, Sao Paulo, SP, Brazil and <sup>4</sup>School of Veterinary Medicine, Sao Joao da Boa Vista, SP, Brazil

Email: Vera MF da Silva - [tucuxi@inpa.gov.br](mailto:tucuxi@inpa.gov.br); Anthony M Carter\* - [acarter@health.sdu.dk](mailto:acarter@health.sdu.dk); Carlos E Ambrosio - [cajuvet@uol.com.br](mailto:cajuvet@uol.com.br); Ana F Carvalho - [vetlab03@feob.br](mailto:vetlab03@feob.br); Marina Bonatelli - [mbonatelli@uol.com.br](mailto:mbonatelli@uol.com.br); Marcelo C Lima - [limamc@usp.br](mailto:limamc@usp.br); Maria Angelica Miglino - [miglino@usp.br](mailto:miglino@usp.br)

\* Corresponding author

Published: 28 June 2007

Received: 14 May 2007

*Reproductive Biology and Endocrinology* 2007, **5**:26 doi:10.1186/1477-7827-5-26

Accepted: 28 June 2007

This article is available from: <http://www.rbej.com/content/5/1/26>

© 2007 da Silva et al; licensee BioMed Central Ltd.

This is an Open Access article distributed under the terms of the Creative Commons Attribution License (<http://creativecommons.org/licenses/by/2.0>), which permits unrestricted use, distribution, and reproduction in any medium, provided the original work is properly cited.

### Abstract

A recent reassessment of the phylogenetic affinities of cetaceans makes it timely to compare their placentation with that of the artiodactyls. We studied the placentae of two sympatric species of dolphin from the Amazon River Basin, representing two distinct families. The umbilical cord branched to supply a bilobed allantoic sac. Small blood vessels and smooth muscle bundles were found within the stroma of the cord. Foci of squamous metaplasia occurred in the allanto-amnion and allantochorion. The interhemal membrane of the placenta was of the epitheliochorial type. Two different types of trophoblastic epithelium were seen. Most was of the simple columnar type and indented by fetal capillaries. However, there were also areolar regions with tall columnar trophoblast and these were more sparsely supplied with capillaries. The endometrium was well vascularised and richly supplied with actively secreting glands. These findings are consistent with the current view that Cetacea are nested within Artiodactyla as sister group to the hippopotamids.

### Background

Little is known of placentation in whales [1]. Turner [2] showed that they have epitheliochorial placentation. For the baleen whales (suborder Mysticeti) our knowledge has advanced little further [3], since available specimens often have been in too poor condition for histology [4]. There is an excellent study of the early development of the fetal membranes in the humpback whale [5], but it does not extend to the establishment of the placenta. Rather more is known about the toothed whales (suborder Odontoceti), although based on descriptions of single specimens of bottlenose dolphin [6], harbour porpoise

[7,8], killer whale [9], right whale dolphin [1] and Commerson's dolphin [1]. A brief account of placentation in the Ganges river dolphin was based on examination of four pregnant females [10].

Several lines of evidence point to a close relationship between the mammalian orders Cetacea and Artiodactyla (even-toed hoofed mammals). The argument is supported by recent fossil evidence [11,12] as well as by molecular phylogenetics, which has Cetacea nested within Artiodactyla and closely related to hippopotami [13-18]. This new interpretation of the phylogenetic affinities of cetaceans

makes it interesting to re-examine their placentation and ask what morphological transformations occurred in the lineage of these aquatic mammals.

The Amazon River Basin is unusual in harbouring two sympatric species of cetacean, the small gray dolphin or tucuxi (*Sotalia fluviatilis* [19]) and the pink dolphin or boto (*Inia geoffrensis* [20]). Features shared by *Inia* and *Sotalia* include a reproductive cycle determined by the annual flooding cycles of the Amazon. Calving takes place when water levels are low or declining and fish more concentrated and susceptible to predation [21]. It is thought that *Inia* entered South America in the Miocene, at which time drainage of the Amazon Basin was towards the Pacific [20]. Subsequent uprising of the Andes led to clockwise reversal of the drainage of the Amazon. There was also disruption of a much larger river system, resulting in the isolation of three populations of *Inia* in the Orinoco Basin, the Amazon Basin and, separated by a waterfall barrier, in the Amazon tributaries of eastern Bolivia [22]. *Sotalia* is thought to have entered the Amazon Basin more recently, from the Atlantic, becoming the first non-platanistoid dolphin to live exclusively in fresh water [23]. The speciation event that separated it from the coastal *S. guianensis* has been dated to the Pliocene [23] or early Pleistocene [24].

Information about reproduction in river dolphins is sparse [21]. From time to time, individuals that have drowned in fishermen's nets are brought to the National Institute of Amazonian Research in Manaus and preserved for different studies. We have examined the placentae of these dolphins, which represent two distinct families: *I. geoffrensis* is an Iniidae and *S. fluviatilis* is the only freshwater species of the marine dolphin family Delphinidae.

**Methods**

Three specimens of *I. geoffrensis* and one of *S. fluviatilis* were available for study at the National Institute of Amazonian Research (Table 1). The uterus had been opened and a large portion, with the placenta in situ and the fetus attached by the cord, had been fixed in 10% formalin. An additional specimen of *I. geoffrensis* from the Museum of Anatomy, School of Veterinary Medicine, University of

**Table 1: Morphometric data**

	Fetal weight (g)	Crown-rump length (cm)	Length of cord (cm)
<i>Inia geoffrensis</i> (MA-993)	1,900	50	-
<i>Inia geoffrensis</i> (Toc 16)	2,000	40	13
<i>Inia geoffrensis</i> (F34/A)	4,200	57	21
<i>Inia geoffrensis</i> (FMVZ)	1,500	43	21
<i>Sotalia fluviatilis</i> (F-05)	3,500	61	-

Sao Paulo, consisted of fetus and membranes detached from the uterus and fixed in formalin. After examining the gross morphology, pieces of tissue were excised and processed for histology by standard methods. The paraffin-embedded tissue was sectioned at 5 µm and stained with haematoxylin and eosin (H.E.), Masson's triple stain, or by the periodic acid Schiff reaction (PAS).

**Results**

**Gross anatomy**

Similar features were found for both species under discussion. The umbilical cord contained two arteries, two veins and the urachus. After about 20 cm, the cord divided into two branches each containing a single artery and vein. Pigmented tissue accretions of variable size and irregular distribution were found on the surface of the cord.

The amnion and allantois were translucent membranes and appeared to be avascular. The allantois was the thicker membrane and had a rugous surface. The two membranes were juxtaposed over an extensive area, forming an allanto-amnion. The surface of the allanto-amnion was covered with small accretions. In addition, accretions occurred within the allantochorion and near its surface.

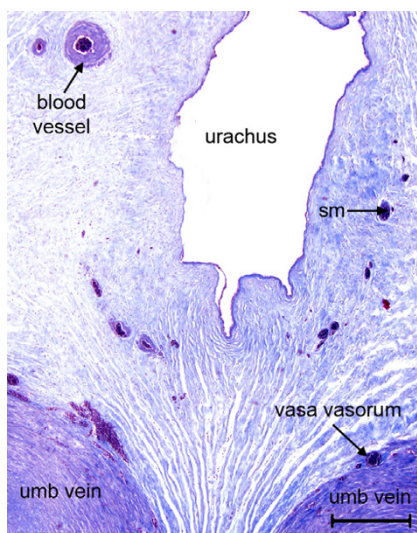
The uterine surface was trabecular in appearance. In most places the placenta adhered closely to the uterine wall, but there were areas where it readily detached. We also found some areas of smooth chorionic membrane that were less well vascularised, but were unable to ascertain their extent.

**Umbilical cord**

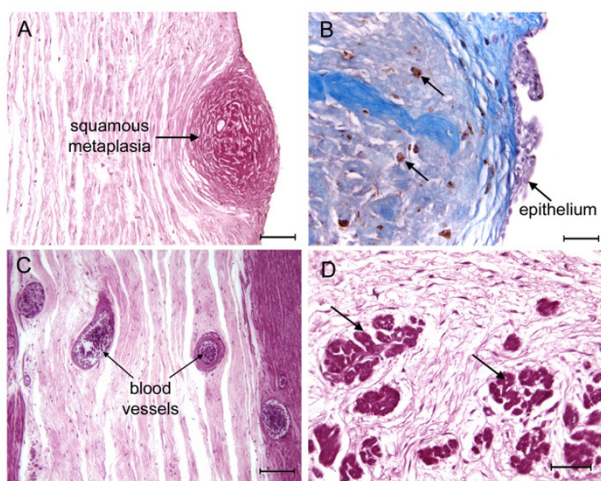
The principal features of the cord are shown in Figure 1. Most of the surface was covered by simple squamous epithelium. The surface accretions were plaques of squamous metaplasia (Figure 2A). They were invested with stratified squamous epithelium (Figure 2B) and sometimes contained macrophages. The urachus was lined with transitional epithelium. The major umbilical vessels, veins as well as arteries, were endowed with vasa vasorum. The stroma of the cord was supplied with small blood vessels (Figure 2C). Smooth muscle bundles were seen within the stroma at some distance from the tunica media of the major vessels (Figure 2D) and running longitudinal to the cord.

**Fetal membranes**

The amnion and allanto-amnion were avascular in both species. The inner surface of the amnion was covered by simple cuboidal epithelium, apparently with a brush border, and the outer surface with simple squamous epithelium (Figure 3A). Simple squamous epithelium also covered the surface of the allanto-amnion. There were large foci of squamous metaplasia at some places within



**Figure 1**  
Umbilical cord of the tucuxi, *Sotalia fluviatilis*. Shown are part of the urachus and the paired umbilical veins with their vasa vasorum. The stroma is supplied with small blood vessels and contains bundles of smooth muscle (sm). Masson's triple stain. Scale bar = 500  $\mu$ m.



**Figure 2**  
Umbilical cord of the boto, *Inia geoffrensis* (A, C-D) and the tucuxi, *Sotalia fluviatilis* (B). (A) Plaque of squamous metaplasia on surface of the cord. PAS. (B) Plaque of squamous metaplasia invested by stratified squamous epithelium. Note the presence of macrophages within the tissue (arrows). Masson's triple stain. (C) Blood vessels in the stroma of the cord. PAS. (D) Smooth muscle bundles (arrows) in the stroma of the cord. PAS. Scale bars = 100  $\mu$ m (A, C), 50  $\mu$ m (B, D).

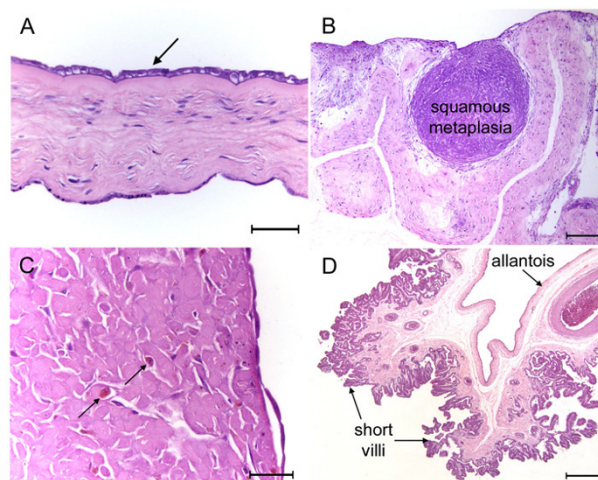
the allanto-amnion (Figure 3B). They were also found near the chorioallantoic plate. They were invested with simple cuboidal or squamous epithelium and housed macrophages (Figure 3C).

**Uterus and placenta**

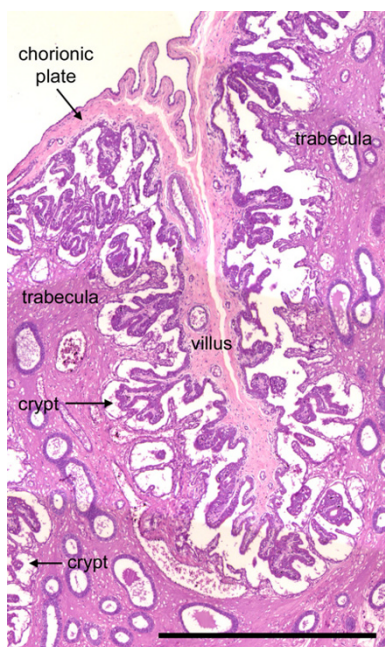
The interhemal membrane was of the epitheliochorial type. The uterine trabeculae interdigitated with folds of allanto chorion that bore the fetal villi (Figure 4). Spaces occurred between the trophoblast and uterine epithelium. As discussed below, they likely were shrinkage artefacts.

The endometrium showed no sign of decidualisation. It was well vascularised (Figure 5A) and richly supplied with glands lined by actively secreting simple columnar epithelium. The cuboidal uterine epithelium was partly indented by the maternal capillaries (Figure 5B).

The folds of allanto chorion were invested with two different types of trophoblastic epithelium. Usually it was of the simple low columnar type indented by the capillaries with which it was so richly supplied (Figure 5C). We were also able to observe areolar regions where the trophoblast was of the tall columnar type with an apparent brush border (Figure 5D). These regions were more sparsely supplied with fetal capillaries. Columnar trophoblast also



**Figure 3**  
Fetal membranes of the tucuxi, *Sotalia fluviatilis* (A, C-D) and the boto, *Inia geoffrensis* (B). (A) The inner surface of the amnion (arrow) is lined by simple cuboidal epithelium. The outer mesothelium forms a simple squamous epithelium. H.E. (B) Folds of allanto-amnion with an area of extensive squamous metaplasia. H.E. (C) Area of squamous metaplasia found close to the placenta showing macrophages (arrows) within the tissue. H.E. (D) Allanto chorion from an area with poorly developed villous trees and short villi. H.E. Scale bars = 50  $\mu$ m (A, C), 200  $\mu$ m (B) 500  $\mu$ m (D).



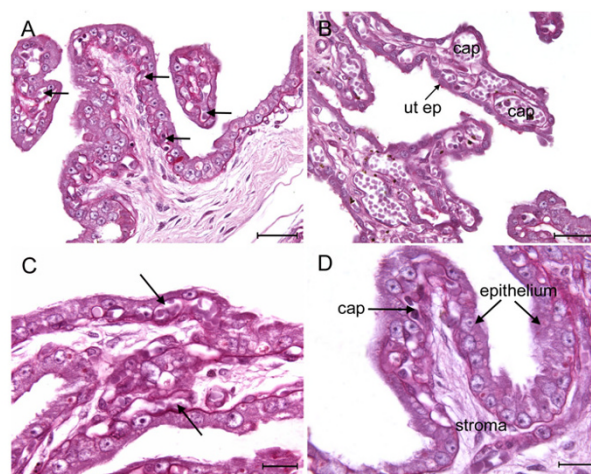
**Figure 4**  
Placentation in the boto, *Inia geoffrensis*. The glandular endometrium forms trabeculae lined with uterine epithelium. Branched chorionic villi are inserted into the crypts. The spaces between the trophoblast and uterine epithelium are likely shrinkage artefacts. H.E. Scale bar = 1000  $\mu$ m.

lined the stretches of chorionic plate between the villous trees (not shown). In some parts of the placenta the fetal villi were short and during fixation had lost contact with the maternal surface (Figure 3D).

**Discussion**

The features of the cord, including its bifurcation to supply a bilobed allantoic sac, are similar to those described for other cetaceans [25]. The vascularisation of the stroma is discussed at some length by Wislocki [7]. Bundles of smooth muscle running longitudinally in the stroma of the cord were also shown in *Phocoena* [7]. The allanto-amnion was avascular in *Inia* and *Sotalia* as in *Tursiops* [6]. Small blood vessels were observed here in *Phocoena* [7]. Plaques of squamous metaplasia were found within and near the allanto-amnion and allantochorion of *Inia* and *Sotalia*, as has been described for other cetaceans [1].

Careful examination of the gravid uterus of *Tursiops* enabled Wislocki and Enders [6] to distinguish two regions of the placenta that were thicker, better vascularised and more closely adherent to the uterus. These were at the tubal end of the left horn, which housed the fetus, and in the right horn. Throughout most of the left horn the chorion was non-adherent and relatively avascular. As noted



**Figure 5**  
Placentation in the boto, *Inia geoffrensis*. (A) Maternal component of a placental exchange area showing uterine epithelium well supplied with capillaries (arrows). PAS. (B) The simple cuboidal uterine epithelium (ut ep) is closely underlain by the capillaries (cap). PAS. (C) Fetal villi from an exchange area showing the rich vascular supply and indentation of the trophoblast by capillaries (arrows). PAS. (D) Columnar trophoblastic epithelium with few capillaries (cap) supplied from the underlying stroma. PAS. Scale bars = 40  $\mu$ m (A-B), 20  $\mu$ m (C-D).

we did find some areas of smooth chorionic membrane with shorter villi and others that were less well vascularised, but were unable to ascertain their extent. In the blocks of tissue taken for histology, the branched chorionic villi and endometrial folds are interlocked, but spaces occur between the trophoblast and uterine epithelium. These appear in other studies [7,8] and it has been suggested that they are not just shrinkage artefacts but may represent natural spaces filled with embryotrophic material. In another odontocete, *Globicephala*, the trophoblast appears closely apposed to the uterine epithelium, except in regions that were more clearly adapted for embryotrophic nutrition. The latter are characterised by columnar trophoblast enclosing spaces that contain uterine gland secretion [26]. As mentioned by Wislocki [7], they tend to occur between the tips of the villi and the fundament of the crypts. In *Inia* and *Sotalia*, we found quite extensive regions of branching villi lined by columnar trophoblast. Columnar epithelium was also found immediately beneath the chorionic plate.

In their brief description of *Globicephala*, Morton and Mulholland [26] mention that the maternal capillaries in many crypt walls are intra-epithelial. This is borne out by our own observations on *Globicephala* at the Mossman Collection (University of Wisconsin Zoological Museum),

but was not seen in either *Inia* or *Sotalia*, although the maternal capillaries did indent the epithelium. We agree with Wislocki and Enders [6] that intraepithelial capillaries do not occur on the fetal side as had been suggested by Ten Cate Hoedemaker [8].

In many odontocetes only the left ovary is active [27]. Consequently, the fetus is always found on the left side of the uterus, although the placenta occupies both horns [6]. Unfortunately, we did not receive information about the side of pregnancy in our specimens. This would have been of interest, since Best and da Silva [21], found scars in both ovaries of all four *Inia* that they examined. In the franciscana, *Pontoporia blainvillei*, which is a close relative of *Inia* [28,29], the right ovary was poorly developed [30]. In *Sotalia fluviatilis* ovarian scars were observed only in the left ovary [21] although both ovaries are active in the coastal species, *S. guianensis* [31].

#### Phylogenetic implications

Until quite recently mammalian phylogenetics dealt with cladistic analysis of skeletal and dental characters. New insights concerning relations between the various orders have been provided by molecular tools, primarily analysis of coding sequences in mitochondrial and nuclear genes [13,15-18] often supplemented by molecular characters such as short and long interspersed elements [14,32] that are less subject to homoplasy. DNA sequence analysis consistently finds Cetacea nested within Artiodactyla. Therefore it is now common to consider cetaceans as part of a wider ordinal clade called Cetartiodactyla. Secondly, the whales and dolphins resolve as the sister group to hippopotamids. This contrasts with the traditional view that hippopotamids are more closely related to pigs and tayassuids. The new arrangement receives robust support from a meta-analysis for all living species of Cetartiodactyla that incorporates morphological as well as molecular data [33]. Recently it was shown that the foot bones of primitive Artiodactyla and early Cetacea exhibited shared, derived characters or synapomorphies [11]. Finally, renewed examination of the osteological characters of fossil and extant artiodactyls, including two early cetaceans, found that pigs and tayassuids formed a monophyletic group to the exclusion of hippopotamids, while cetaceans and hippopotamuses formed another monophyletic group [34].

These recent advances in phylogenetics have led to a re-evaluation of fetal and placental membrane characters [35-37]. Here we find that the placentas of *Sotalia* and *Inia* share a common pattern similar to that described for other cetaceans. It is apt to evaluate this pattern in relation to concepts such as the newly erected superorder Laurasiatheria, the combined order Cetartiodactyla and perceived relationships with the hippopotamids. Several characters

in the placentation of Cetartiodactyla are shared with two other orders within Laurasiatheria, the horses and tapirs (Perissodactyla) and the scaly anteaters (Pholidota). These include the diffuse, villous and epitheliochorial placenta, and the presence of areolae [36,37]. Contrary to common perceptions, recent cladistic analyses agree in finding epitheliochorial placentation to be a derived state and link it to another shared character, the birth of well-developed (precocial) young following a relatively long period of gestation [35-40]. Indentation of trophoblast by fetal capillaries, and uterine epithelium by maternal ones, is common in these placentae and serves to reduce the diffusion distance [39]. Uterine gland secretions are an important source of nutrients in epitheliochorial placentae [35]. Columnar trophoblast, which is able to absorb these nutrients, is found in areolae and in the chorionic fossae [41]. Vascularisation of the cord stroma seems to be another common feature in Cetartiodactyla [7,25].

There are further resemblances in cetacean placentation to that of pigs, tayassuids and hippopotami. However, some characters are shared by hippopotami [42-44] and cetaceans, but not by pigs and tayassuids, in accordance with the current view that hippopotamids are the sister group to cetaceans. These features include a bilobed allantoic sac occupying both horns of the uterus, paired umbilical veins, and plaques of squamous metaplasia on the surface of the cord and amnion. It is interesting that the hippopotamus placenta, like that of *Tursiops* [6], has several distinct areas. One, with intimate interdigitation of chorionic villi and endometrial folds, is found mainly in the mesometrial region; the second is characterised by stunted villi and thinner endometrium; finally there is some relatively avascular chorion at the poles of the chorion and over the cervix.

In conclusion, placentation in *Inia* and *Sotalia* is similar to what has been described for other toothed whales. The limited variation in placental structures is consistent with the view that Odontoceti are monophyletic and derived from a small population of a common ancestral species [32]. Secondly, the epitheliochorial placenta resembles that of even-toed hoofed mammals [45] in accordance with the current view that whales are nested within the larger clade Cetartiodactyla [12]. Finally, some details of the placenta and fetal membranes support the view that whales are the sister group to hippopotamids [14].

#### Authors' contributions

WMFS and MAM devised the study, participated in its design and coordination and helped to write the manuscript. AMC participated in the study design and coordination and wrote the manuscript. CEA participated in the coordination of the study and the histological analysis. AFC, MB and MCL performed a large part of the histolog-

ical analysis. All authors read and approved the final manuscript.

## Acknowledgements

This study was supported by The Carlsberg Foundation (AMC).

## References

1. Comparative placentation [<http://medicine.ucsd.edu/cpa/>]
2. Turner W: **An account of the great finner whale (*Balaenoptera sibbaldi*) stranded at Longnidery.** *Trans R Soc Edinburgh* 1870, **26**:197-251.
3. Zhemkova ZP: **Cetacean placentae.** *Folia Morphol* 1967, **15**(1):104-107.
4. Silvers LE, Atkinson S, Iwasa M, Combelles C, Salden DR: **A large placenta encountered in the Hawaiian winter grounds of the humpback whale, *Megaptera novaeangliae*.** *Mar Mammal Sci* 1997, **13**:711-716.
5. Stump CW, Robins JP, Garde ML: **The development of the embryo and membranes of the humpback whale, *Megaptera nodosa* (Bonnaterre).** *Aus J Marine Freshwater Res* 1960, **2**:365-386.
6. Wislocki GB, Enders RK: **The placentation of the bottle-nosed porpoise (*Tursiops truncatus*).** *Am J Anat* 1941, **68**:97-114.
7. Wislocki GB: **On the placentation of the harbour porpoise (*Phocoena phocoena* (Linnaeus)).** *Biol Bull* 1933, **65**:80-98.
8. Ten Cate Hoedemaker NJ: **Mitteilung über eine reife Plazenta von *Phocoena phocoena* (Linnaeus).** *Arch Neerland Zool* 1935, **1**:330-338.
9. Benirschke K, Cornell LH: **The placenta of the killer whale, *Orcinus orca*.** *Mar Mammal Sci* 1987, **3**:82-86.
10. Harrison RJ: **Reproduction and reproductive organs in *Platanista indi* and *Platanista gangetica*.** In *Investigations on Cetacea Volume 4*. Edited by: Pilleri G. Berne; 1972:71-82.
11. Gingerich PD, Haq M, Zalmout IS, Khan IH, Malkani MS: **Origin of whales from early artiodactyls: hands and feet of Eocene Protocetidae from Pakistan.** *Science* 2001, **293**:2239-2242.
12. Gingerich PD: **Cetacea.** In *The Rise of Placental Mammals: Origins and Relationships of the Major Extant Clades* Edited by: Rose KD, Archibald JD. Baltimore: Johns Hopkins University Press; 2005:234-252.
13. Gatesy J, Hayashi C, Cronin MA, Arctander P: **Evidence from milk casein genes that cetaceans are close relatives of hippopotamid artiodactyls.** *Mol Biol Evol* 1996, **13**:954-963.
14. Nikaido M, Rooney AP, Okada N: **Phylogenetic relationships among cetartiodactyls based on insertions of short and long interspersed elements: hippopotamuses are the closest extant relatives of whales.** *Proc Natl Acad Sci USA* 1999, **96**:10261-10266.
15. Murphy WJ, Eizirik E, O'Brien SJ, Madsen O, Scally M, Douady CJ, Teeling E, Ryder OA, Stanhope MJ, de Jong WW, Springer MS: **Resolution of the early placental mammal radiation using Bayesian phylogenetics.** *Science* 2001, **294**:2348-2351.
16. Waddell PJ, Kishino H, Ota R: **A phylogenetic foundation for comparative mammalian genomics.** *Genome Inform* 2001, **12**:141-154.
17. Amrine-Madsen H, Koepfli KP, Wayne RK, Springer MS: **A new phylogenetic marker, apolipoprotein B, provides compelling evidence for eutherian relationships.** *Mol Phylogenet Evol* 2003, **28**:225-240.
18. Springer MS, Stanhope MJ, Madsen O, de Jong WW: **Molecules consolidate the placental mammal tree.** *Trends Ecol. Evol* 2004, **19**:430-438.
19. Silva VMF, Best RC: ***Sotalia fluviatilis*.** *Mammalian Species No. 527* 1996:1-7 [<http://www.science.smith.edu/departments/Biology/VHAY/SSN/msi/pdf/i0076-3519-527-01-0001.pdf>]. American Society of Mammalogists
20. Best RC, Silva VMF: ***Inia geoffrensis*.** *Mammalian Species No. 426* 1993:1-8 [<http://www.science.smith.edu/departments/Biology/VHAY/SSN/msi/pdf/i0076-3519-426-01-0001.pdf>]. American Society of Mammalogists
21. Best RC, da Silva VMF: **Preliminary analysis of reproductive parameters of the boto, *Inia geoffrensis*, and the tucuxi, *Sotalia fluviatilis*, in the Amazon River system.** *Rep Int Whal Commn, (Special Issue 6)* 1984:361-369.
22. Hamilton H, Caballero S, Collins AG, Brownell RL Jr: **Evolution of river dolphins.** *Proc R Soc Lond B Biol Sci* 2001, **268**(1466):549-556.
23. Cunha HA, da Silva VMF, Lailson-Brito J, Santos MCO, Flores PAC, Martin AR, Azevedo AF, Fragoso ABL, Zanelatto RC, Sole-Cava AM: **Riverine and marine ecotypes of *Sotalia* dolphins are different species.** *Marine Biol* 2005, **148**:449-457.
24. Caballero S, Trujillo F, Vianna JA, Barrios-Garrido H, Montiel MG, Beltrán-Pedrerros S, Marmontel M, Santos MC, Rossi-Santos M, Santos FR, Baker CS: **Taxonomic status of the genus *Sotalia*: Species level ranking for "tucuxi" (*Sotalia fluviatilis*) and "costero" (*Sotalia guianensis*) dolphins.** *Marine Mamm Sci* 2007, **23**:358-386.
25. Arvy L, Pilleri G: **The cetacean umbilical cord; studies of the umbilical cord of two Platanistoidea: *Platanista gangetica* and *Pontoporia blainvillei*.** In *Investigations on Cetacea Volume 7*. Edited by: Pilleri G. Berne; 1976:91-103.
26. Morton WRM, Mulholland HC: **The placenta of the Ca'ing whale, *Globicephala melaena* (Traill) [abstract].** *J Anat Lond* 1961, **95**:605.
27. Ohsumi S: **Comparison of maturity and accumulation rate of corpora albicantia between the left and right ovaries in cetacea.** *Sci Rep Whales Res Inst* 1964, **18**:123-148.
28. Yan J, Zhou K, Yang G: **Molecular phylogenetics of "river dolphins" and the baiji mitochondrial genome.** *Mol Phylogenet Evol* 2005, **37**:743-750.
29. May-Collado L, Agnarsson I: **Cytochrome b and Bayesian inference of whale phylogeny.** *Mol Phylogenet Evol* 2006, **38**:344-354.
30. Harrison RJ, Brownell RL: **The gonads of the South American dolphins, *Inia geoffrensis*, *Pontoporia blainvillei*, and *Sotalia fluviatilis*.** *J Mammal* 1971, **52**(2):413-419.
31. Weber Rosas FC, Monteiro-Filho ELA: **Reproduction of the estuarine dolphin (*Sotalia guianensis*) on the coast of Paran, Southern Brazil.** *J Mammal* 2002, **83**:507-514.
32. Nikaido M, Piskurek O, Okada N: **Toothed whale monophyly reassessed by SINE insertion analysis: The absence of lineage sorting effects suggests a small population of a common ancestral species.** *Mol Phylogenet Evol* 2007, **43**:216-224.
33. Price SA, Bininda-Emonds OR, Gittleman JL: **A complete phylogeny of the whales, dolphins and even-toed hoofed mammals (Cetartiodactyla).** *Biol Rev Camb Philos Soc* 2005, **80**:445-473.
34. Boisserie JR, Lihoreau F, Brunet M: **The position of Hippopotamidae within Cetartiodactyla.** *Proc Natl Acad Sci USA* 2005, **102**:1537-1541.
35. Vogel P: **The current molecular phylogeny of Eutherian mammals challenges previous interpretations of placental evolution.** *Placenta* 2005, **26**:591-596.
36. Mess A, Carter AM: **Evolutionary transformations of fetal membrane characters in Eutheria with special reference to Afrotheria.** *J Exp Zool B Mol Dev Evol* 2006, **306**:140-163.
37. Mess A, Carter AM: **Evolution of the placenta during the early radiation of placental mammals.** *Comp Biochem Physiol A Mol Integr Physiol* in press. 2007, Feb 2;
38. Martin RD: **Human reproduction: a comparative background for medical hypotheses.** *J Reprod Immunol* 2003, **59**:111-135.
39. Carter AM, Enders AC: **Comparative aspects of trophoblast development and placentation.** *Reprod Biol Endocrinol* 2004, **2**:46.
40. Wildman DE, Chen C, Erez O, Grossman LI, Goodman M, Romero R: **Evolution of the mammalian placenta revealed by phylogenetic analysis.** *Proc Natl Acad Sci USA* 2006, **103**:3203-3208.
41. Enders AC, Carter AM: **Comparative placentation: some interesting modifications for histotrophic nutrition.** *Placenta* 2006, **27**(Suppl A):S11-16.
42. Amoroso EC, Hancock NA, Kellas L: **The foetal membranes and placenta of the hippopotamus (*Hippopotamus amphibius* (Linnaeus)).** *Proc Zool Soc London* 1958, **130**:437-447.
43. Macdonald AA, Bosma AA: **Notes on placentation in the Suina.** *Placenta* 1985, **6**:83-91.
44. Benirschke K: **On the placenta of the hippopotamus.** *PPHSG News* 2003, **3**:17-20.
45. Klisch K, Mess A: **Evolutionary differentiation of cetartiodactyl placentae in the light of the viviparity-driven conflict hypothesis.** *Placenta* 2007, **28**:353-360.